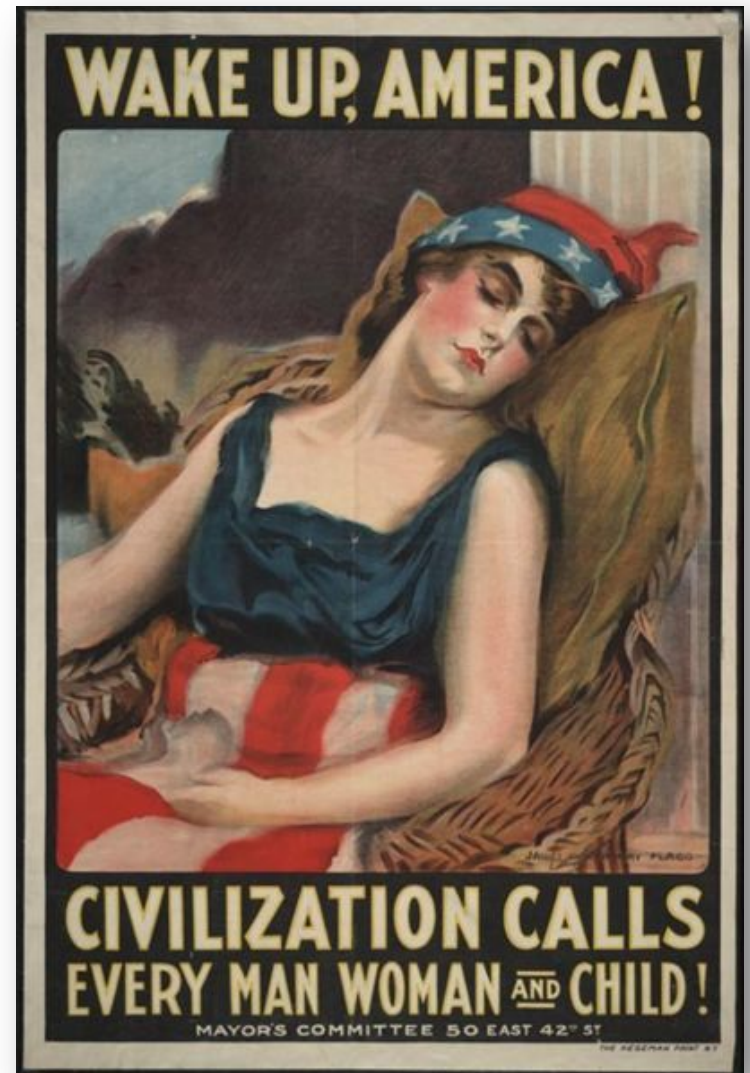


THE ROAD TO WAR

The U.S. and the
Entrance into the
Great War



U.S. AND WW I

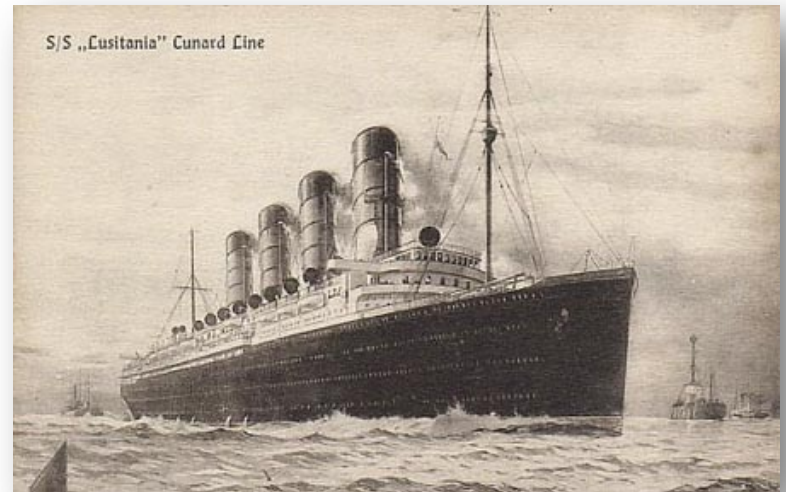
- **Neutrality**
 - **Officially we were neutral**
 - **Many German Americans liked Germany**
 - **Old rich Americans tended to support the Allies**

WARTIME TRADING

- **Since we were neutral, we tried to trade to both side**
 - **Britain prevented our ships from going to Germany by blockading the German ports**
 - **Because of this, we did most of our trading with the Allies**
 - **Germany tried to stop our trading with Great Britain and France with the use of U-Boats**

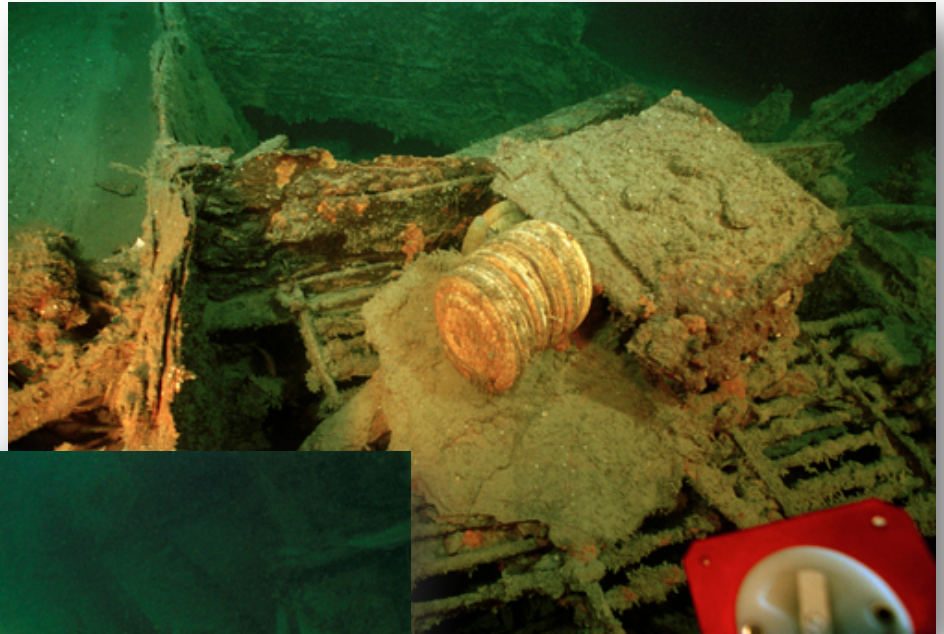
TROUBLE WITH GERMANY

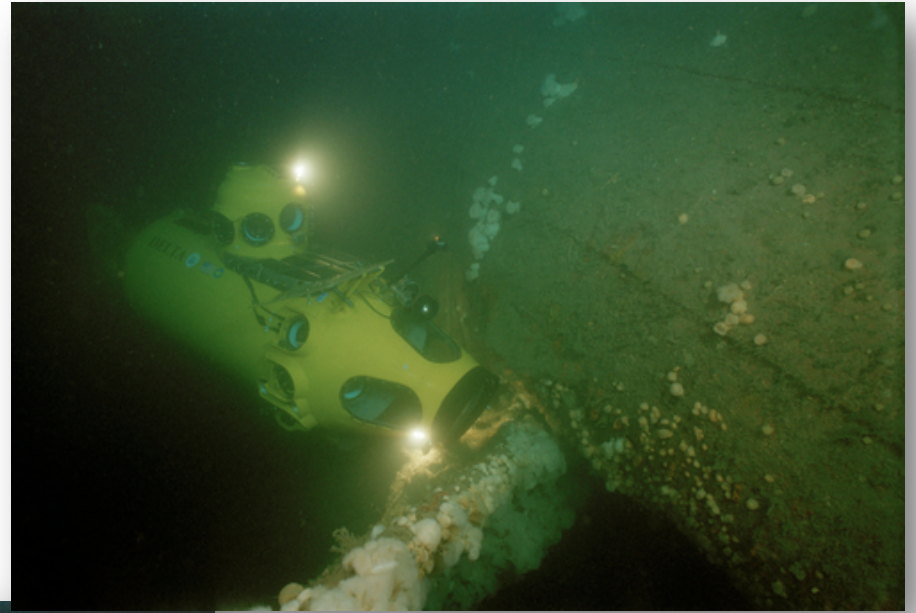
- **Lusitania**
 - **Germany sank the Lusitania – a luxury liner carrying 1200 civilians (128 were American)**
 - **Great Britain was transporting ammunition in the ship**
 - **We were outraged and the British denied using the ship to transport arms**



The Wreck of the Lusitania







Munitions on the Lusitania



THE LAST STRAW - ALMOST

- **The Sussex – March 1916**
 - **Germany sunk a French ship, the Sussex**
 - **Wilson demanded that Germany stop submarine warfare**
 - **Germany backed down and paid damages**



Germany's Big Push



- **January 1917 – Germany thought it was close to winning the war**
 - **Germany started submarine war again**
 - **Hoped to cut off supplies to Great Britain**

THE LAST STRAW

Zimmerman Note

- Germany tried to get an alliance with Mexico
- In exchange, Germany would help Mexico regain lost territory (Texas, New Mexico, and Arizona)
- Germany also sunk 4 U.S. Ships
- This was breaking point

WESTERN UNION TELEGRAM
NEWCOMB CARLTON, PRESIDENT

CLASS OF SERVICE DESIRED
 Fast Day Message
 Day Letter
 Night Message
 Night Letter
Patrons should mark an X opposite the class of service desired; OTHERWISE THE TELEGRAM WILL BE TRANSMITTED AS A FAST DAY MESSAGE.

Send the following telegram, subject to the terms on back hereof, which are hereby agreed to

via Galveston

GERMAN LEGATION
MEXICO CITY

130	13042	13401	8501	115	3528	416	17214	6491	11310
18147	18222	21560	10247	11518	23677	13805	3494	14936	
98092	5905	11311	10392	10371	0302	21290	5101	39695	
23571	17504	11289	18276	18101	0317	0228	17694	4473	
23284	22200	19452	21589	67893	5569	13918	8958	12137	
1333	4725	4458	5905	17106	13851	4458	17149	14471	6706
13850	12224	6929	14991	7382	15857	67893	14218	36477	
5870	17553	67893	5870	5454	16102	15217	22801	17138	
21001	17388	7446	23638	18222	6719	14331	15021	23845	
3156	23552	22096	21604	4797	9497	22464	20855	4377	
23610	18140	22260	5905	13347	20420	39689	13732	20667	
6929	5275	18507	52262	1340	22049	13339	11265	22295	
10439	14814	4178	6992	8784	7632	7357	6926	52262	11267
21100	21272	9346	9559	22464	15874	18502	18500	15857	
2188	5376	7381	98092	16127	13486	9350	9220	76036	14219
5144	2831	17920	11347	17142	11264	7667	7762	15099	9110
10482	97556	3569	3670						

Charge German Embassy.

JAN 19 1917

862.20219/12A

APRIL 2, 1917 – WE GO TO WAR

